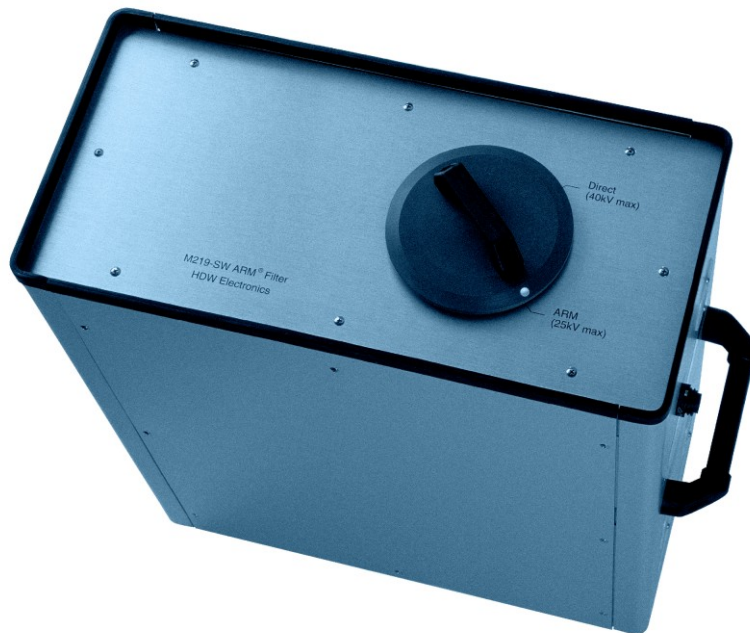




M219 / 1000 J

M219 / 3500 J

Arc Reflection Filter for Cable Fault Locating



Upgrade Your Thumper to Arc Reflection

Technical Specification Model M219 Arc Reflection Filter

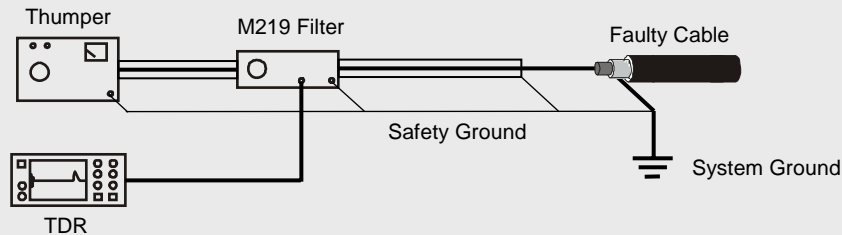
Arc Reflection Filter for Cable Fault Locating

The M219 filter converts most thumpers into an efficient fault prelocating system, when used in conjunction with a TDR in the Arc Reflection Mode (ARM®).

The ARM® method is a fast way to prelocate faults, and will reduce the time to pinpoint the fault and minimize the risk of additional damage to the cable.

The use of a TDR in conjunction with a thumper requires the presence of a filter. It protects the TDR from the high voltage of the thumper and allows it to work in synchronization with the thumper. The thumper creates an arc at the location of the high resistance fault, converting it to a lower resistance fault while the arc is active. The low resistance fault is detected by the TDR as a reflection and the distance to the fault can be determined.

Please inquire about the details to upgrade your specific thumper.



Features:

- Safety interlock prevents thumper from being turned on when filter is not ready
- Extra outlet 120 VAC for connecting TDR

ARM® Operation Mode:

0 ... 32 kV

Max. Surge Load in ARM® :

Model M219/1000

150 surges of 1000 Joules per hour

Model M219/3500

150 surges of 3500 Joules per hour

Proof Test Direct Operation:

0 ... 40 kV

Burn Direct Operation:

0 ... 40 kV, 0 ... 25 A

AC Rating:

120 V/60 Hz \pm 10%

15 A max.

Dimensions:

21.5" x 10.5" x 24.5"

Weight:

approx. 110 lbs.

Versions available:

- **M219/1000 SWT** for ARM® (Arc Reflection Method) with capacitive trigger output for digital TDRs
- **M219/3500 SWT Surge, 1000 or 3500 J** features additional inductive trigger output for surge pulse coupling on digital TDRs
- **ARM®** is a Trademark of HDW Electronics, Inc.

HDW Electronics Inc., 89 S. Commerce Way,
Bethlehem PA 18017

Tel: (610) 861-8862 • Fax: (610) 861-8864

Internet: www.hdwelectronics.com

E-mail: sales@hdwelectronics.com

Your Local Representative is: